

FROG_APP SETUP



Electrical connections and warnings



- Electrical connections can only be made by a qualified technician , in compliance with the relevant regulations.
- Modules must be connected in series, for connections use special connectors (PV4 or MC4).
- Connect the panels to the resistance by means of a solar cable with a minimum cross-section of 4mmq, taking into account the distance between the photovoltaic modules and the boiler.
- Arrange between the modules and the boiler a suitable magnetothermic protection or fuses.
- The panels exposed to the Sun are always under tension so be careful in the connections.
- For operations on the Frog_App, always disconnect the PV modules first, either with an isolating switch or via connectors.
- You can use the app only in one device.

Important

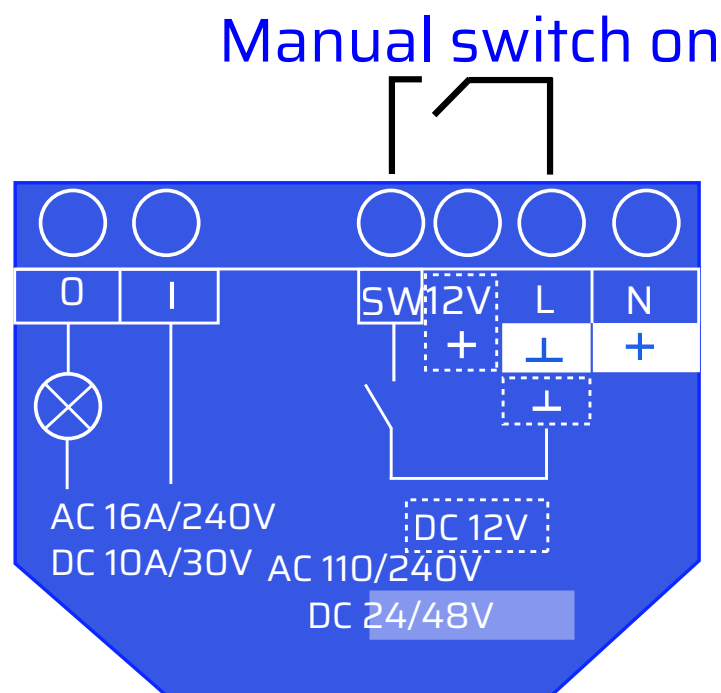
In case of manual switch on (lack of Wi-Fi connection) put the unipolar switch between the clamps "L" and "SW" of the Shelly plus 1 (See diagram 1 below).

Attention: the Add-on module is used for temperature regulation.

It is mandatory for the user to set it before starting the system (follow the instructions on this guide).

If the user does not have the ability to connect it to Wi-Fi, he must necessarily configure the Shelly in a place where there is Wi-Fi, or via hot-spot of the smartphone. The Shelly can also work offline, disconnecting the resistance when the water temperature exceeds 80 °C but must necessarily be configured previously via app.

Diagram 1



Electrical connections

Electrical connections with connectors supplied as standard.

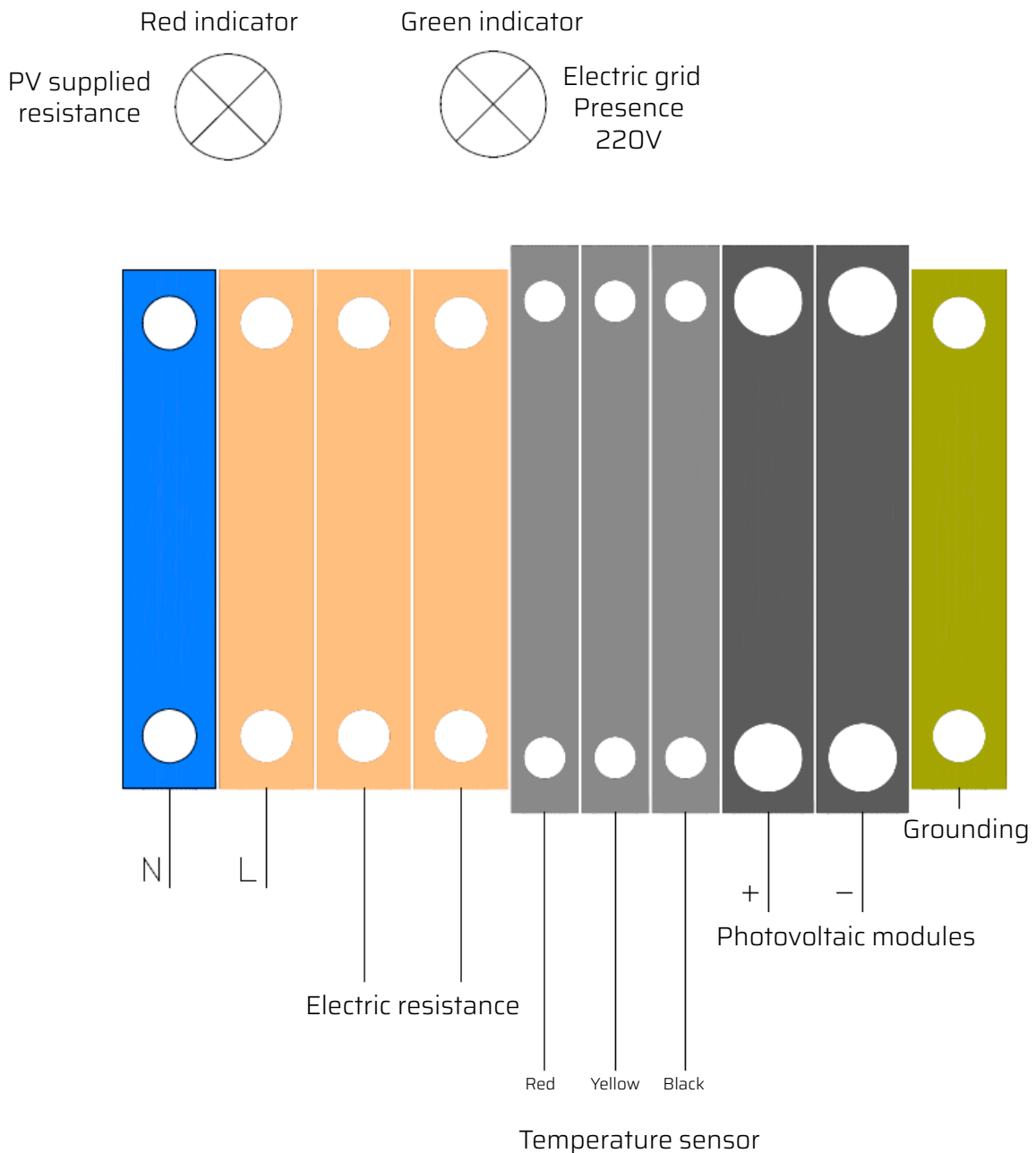
Electrical cables:

1,5 mm section for 125 W and 165 W resistances;

2.5 mm section for 85 W resistance.

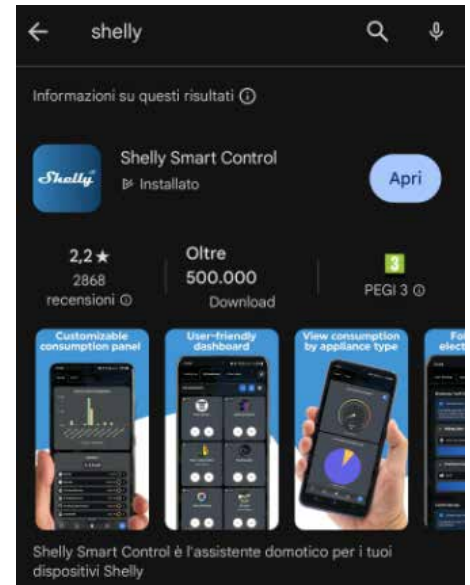
The cables are supplied as standard only on the natural circulation model.

Diagram 2

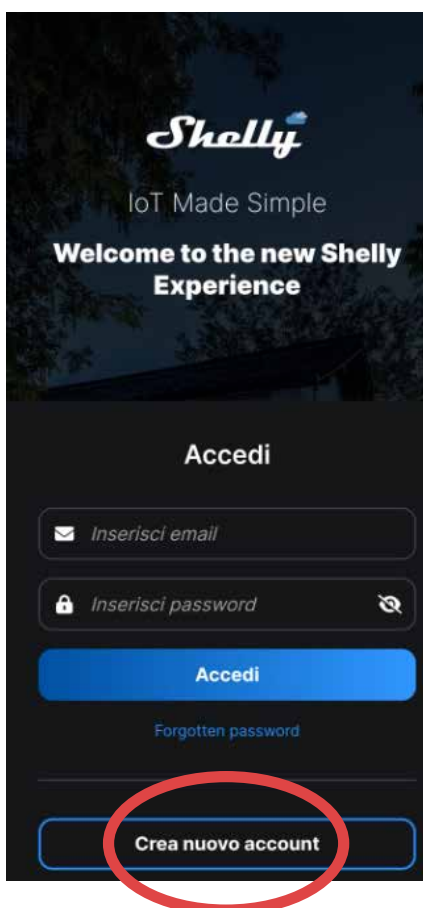


Frog_App Setup

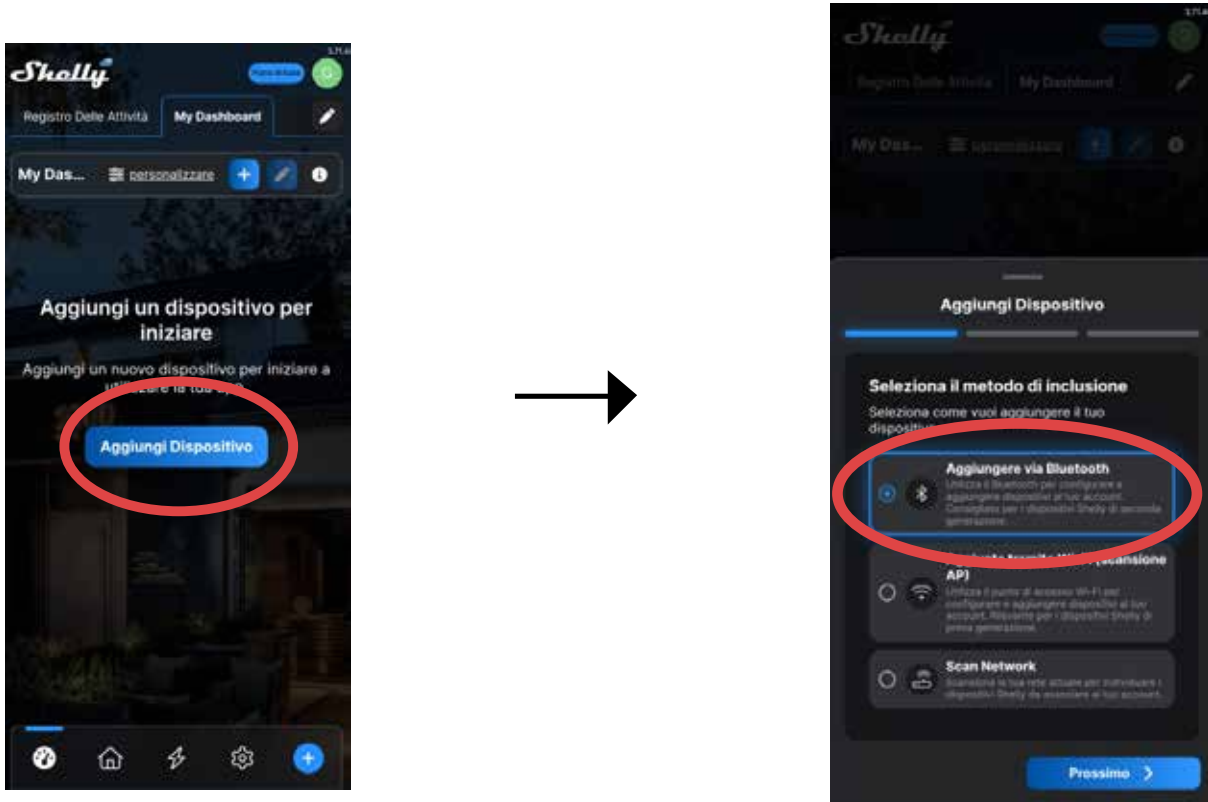
1) Open the play store or app store (depending on your Device) and download the "Shelly Smart Control" app.



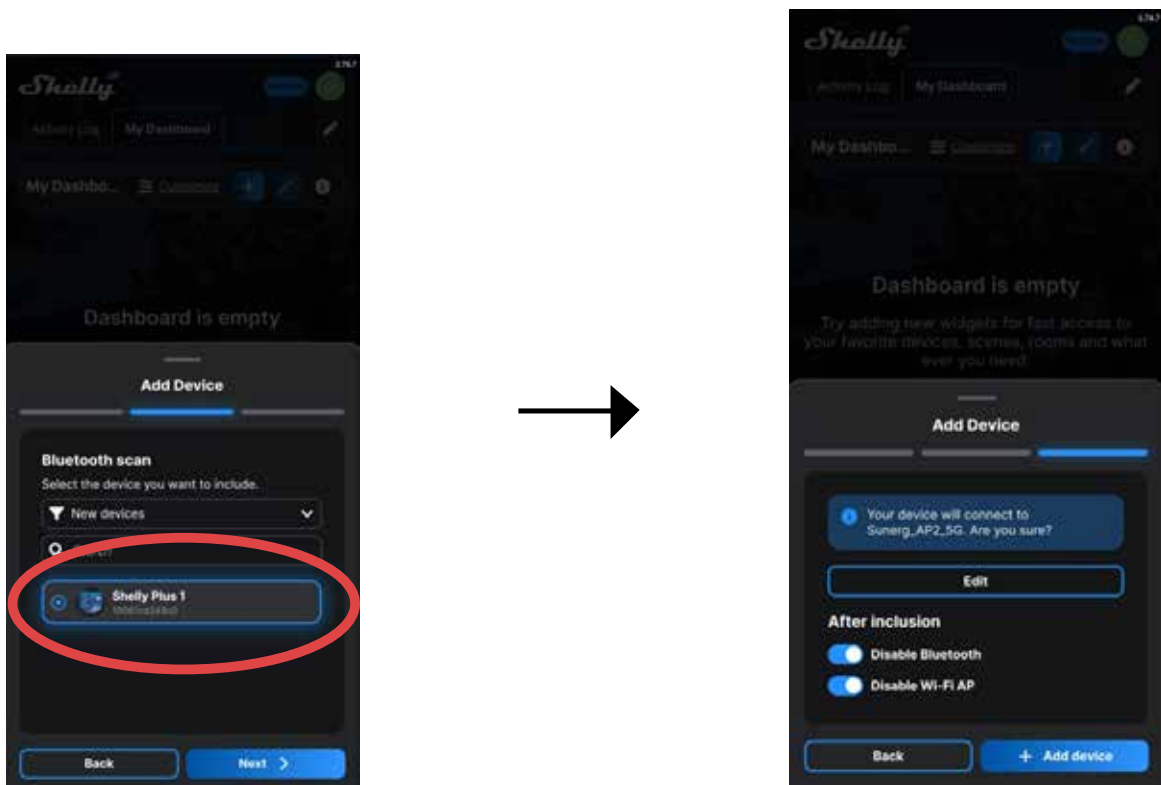
2) Once the app is open, create a new account by registering with your email and password. Then connect your smartphone to the Wi-Fi of the Shelly plus 1.



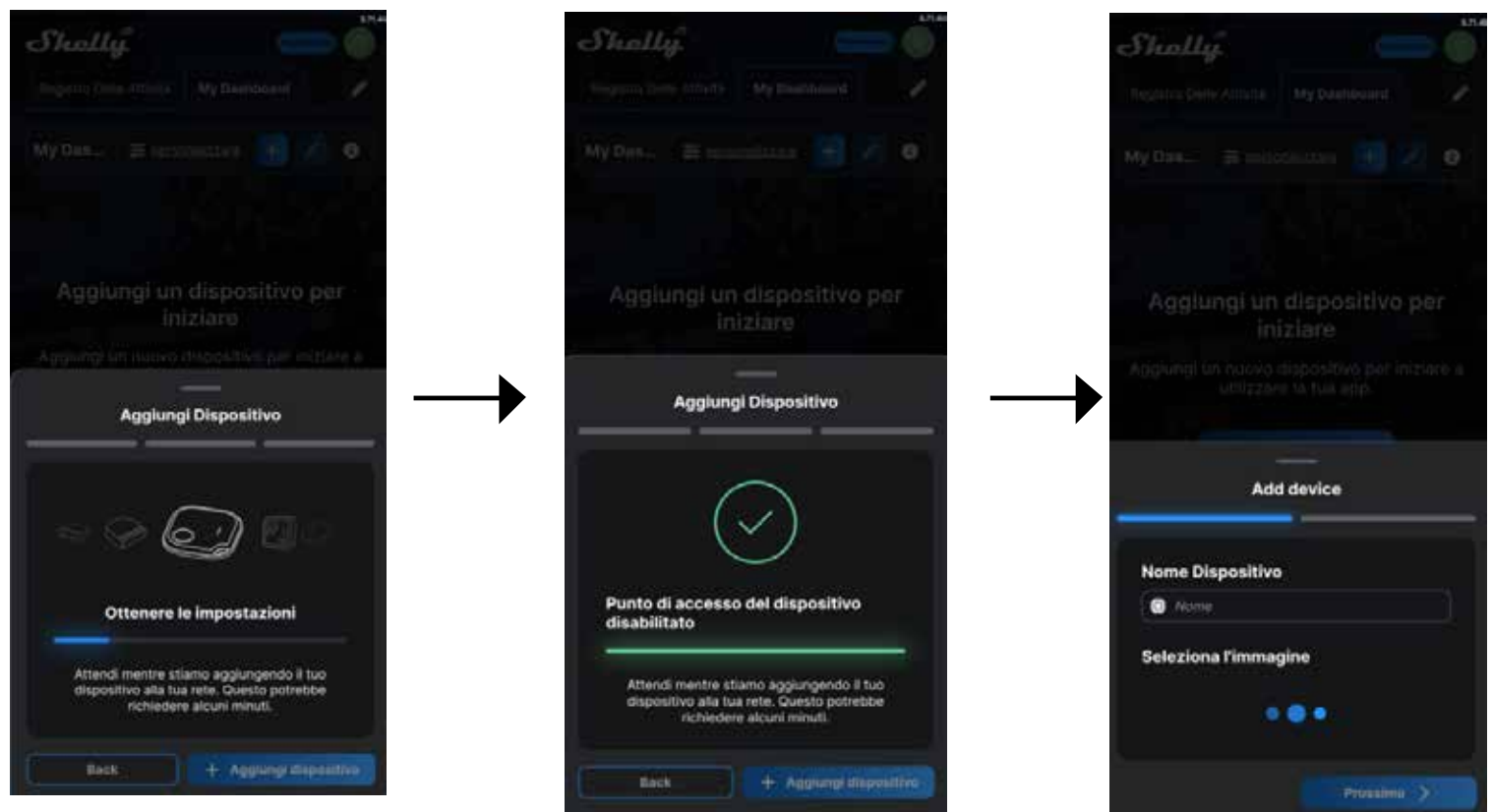
3) Once logged in the app, select "add device", then turn on the bluetooth of your smartphone, then select the option "add via bluetooth", then click on "next".



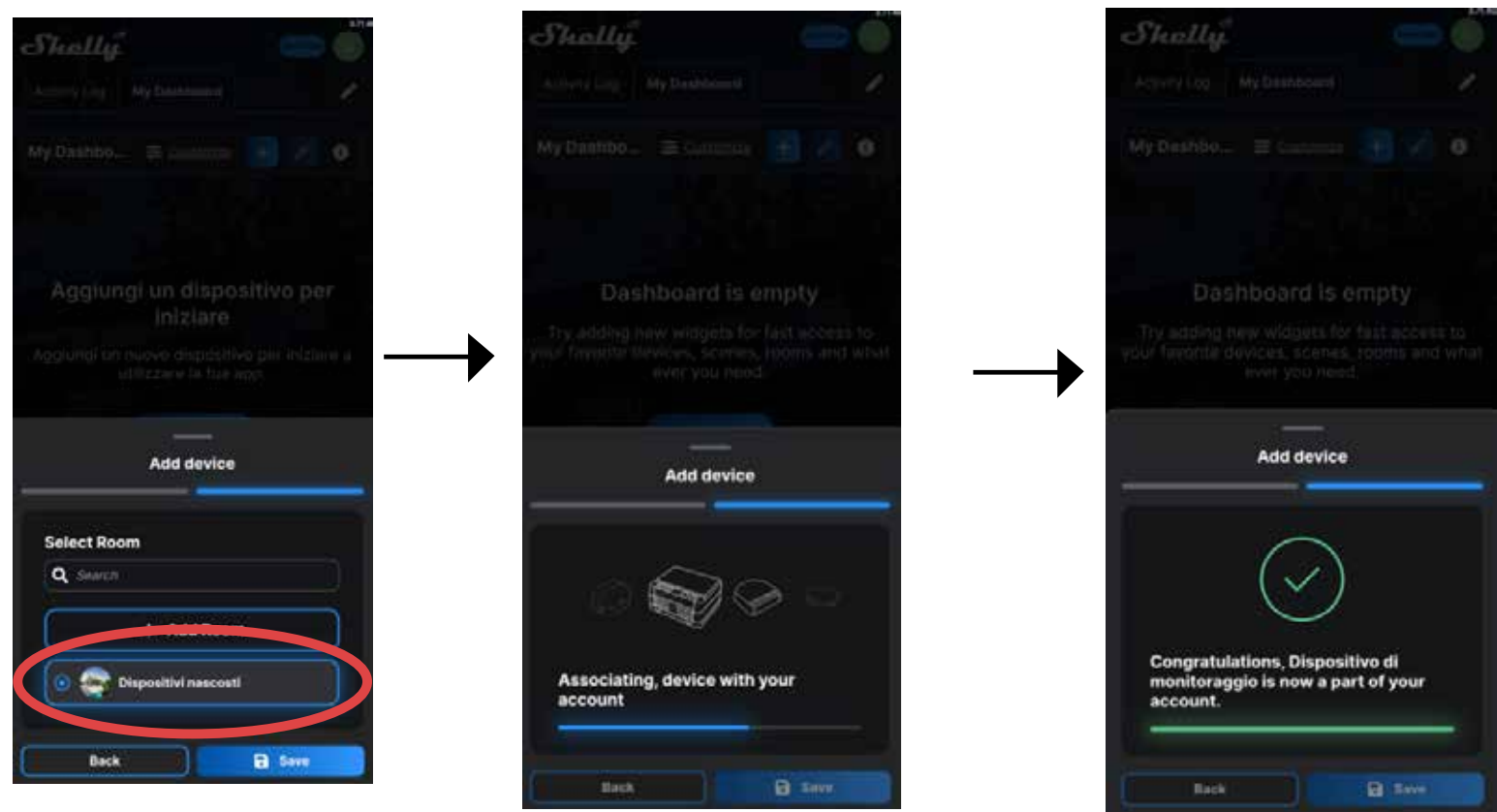
4) Once the bluetooth is turned on, select " Shelly plus 1 " then click on "next". Then connect Shelly plus 1 to your Wi-Fi. Enter your Wi-Fi name and password in the appropriate fields. Keep the settings as shown in the image. Then click on "add device".



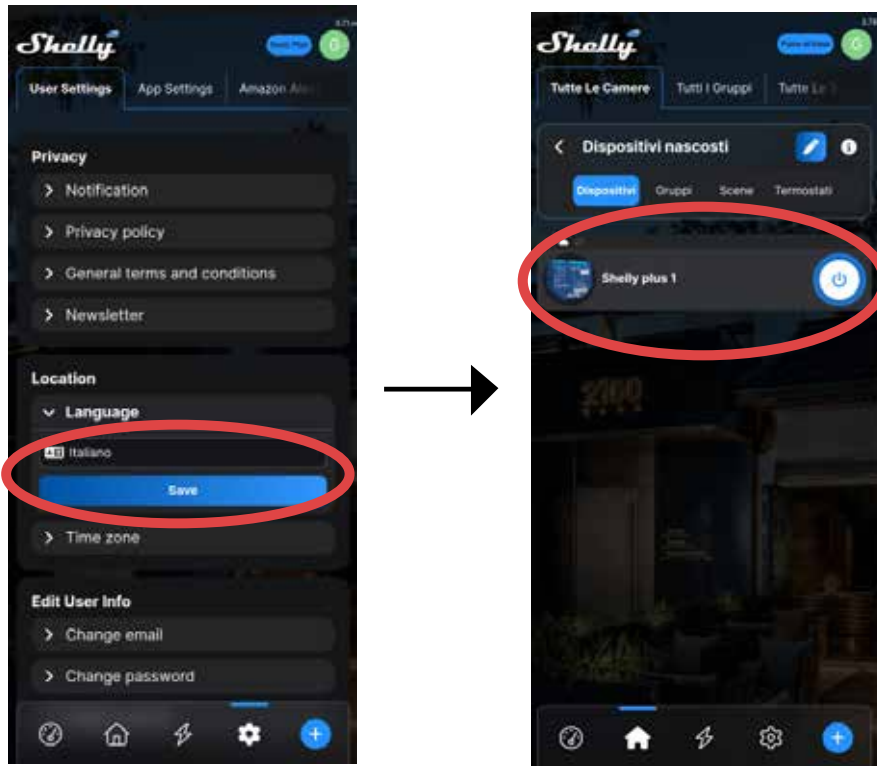
5) Now you have to wait for the loading. Once finished, choose the name and image of the device.



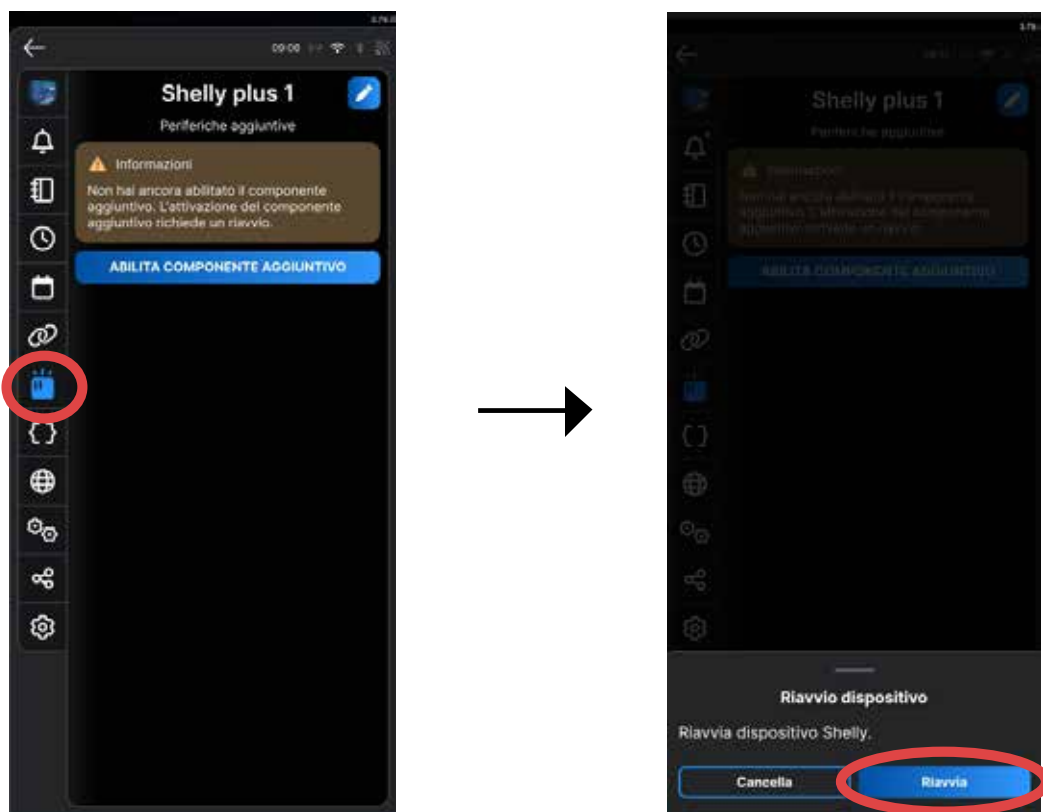
6) Then select "hidden devices" and wait for the pairing.



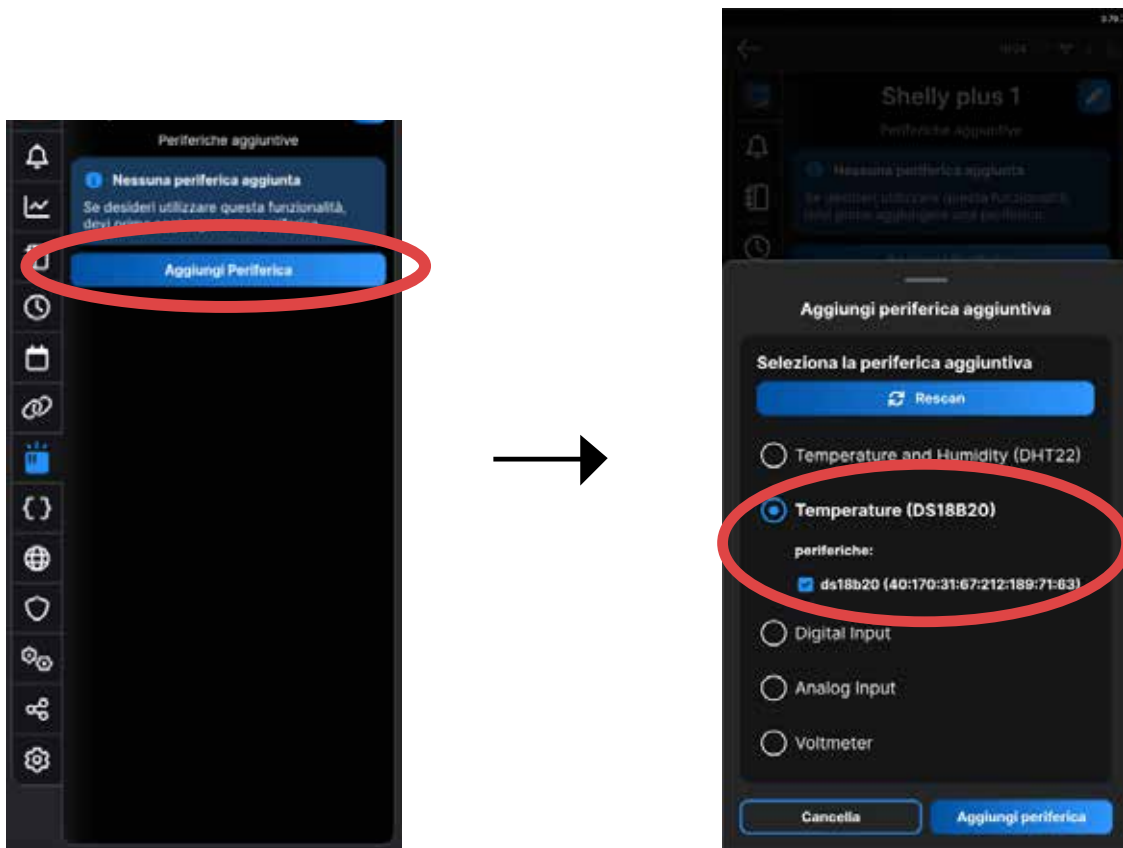
7) Then go to settings via the gear wheel at the bottom right and select the language. Next, click on the symbol of the house at the bottom left. Next click on Shelly plus 1 device that has been connected previously.



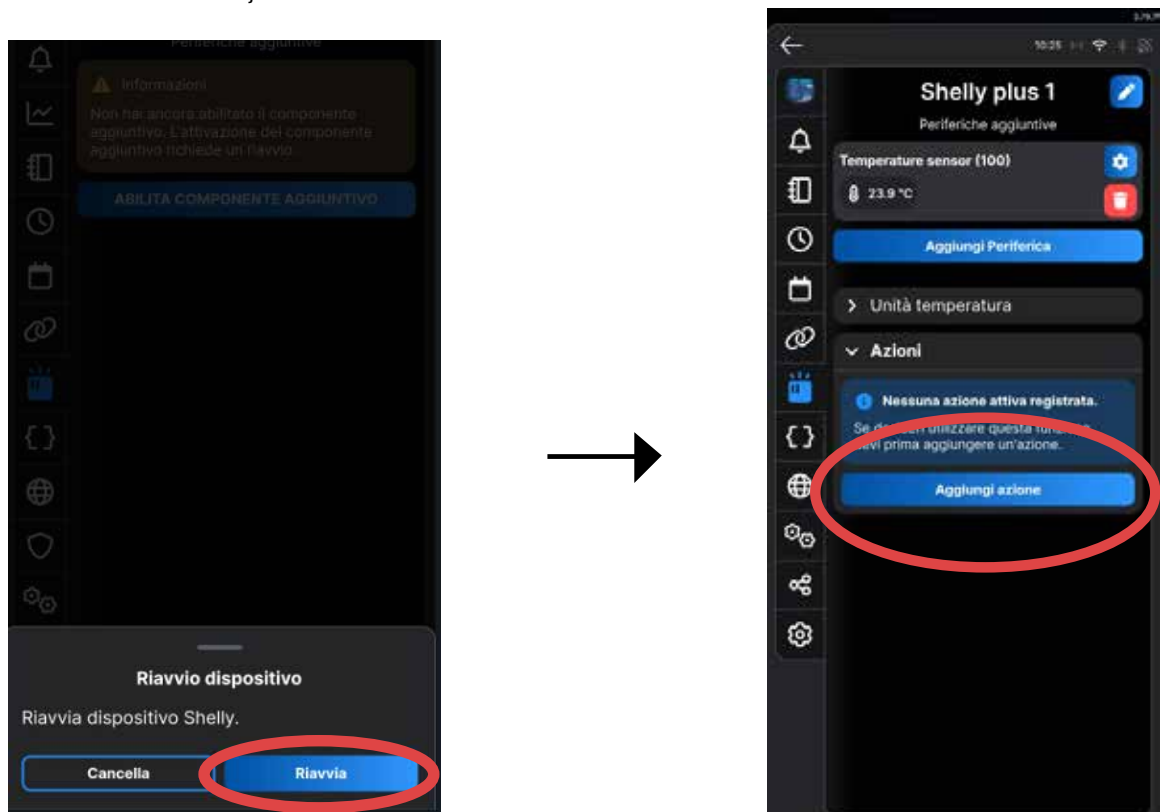
8) Once you click on the device, you need to connect the temperature sensor. To do this, click on the symbol in the picture. After clicking on the icon, click on "enable add-on". Then restart the Shelly device.



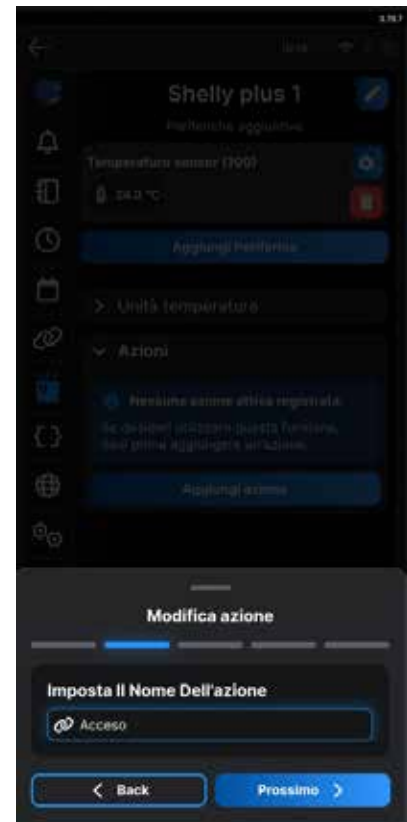
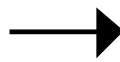
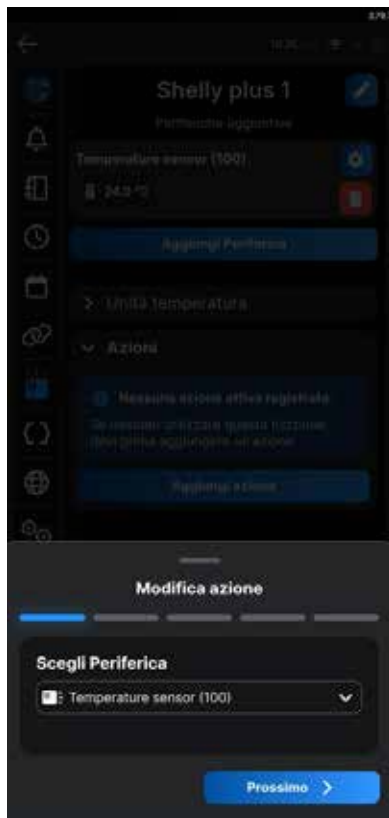
9) Return to the same section as before and click on "add device". Then select the temperature sensor "DS18B20" and click on "add device" at the bottom right.



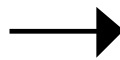
10) Then reboot the Shelly device and return to the same section as before, but this time click on "actions", then on "add action".



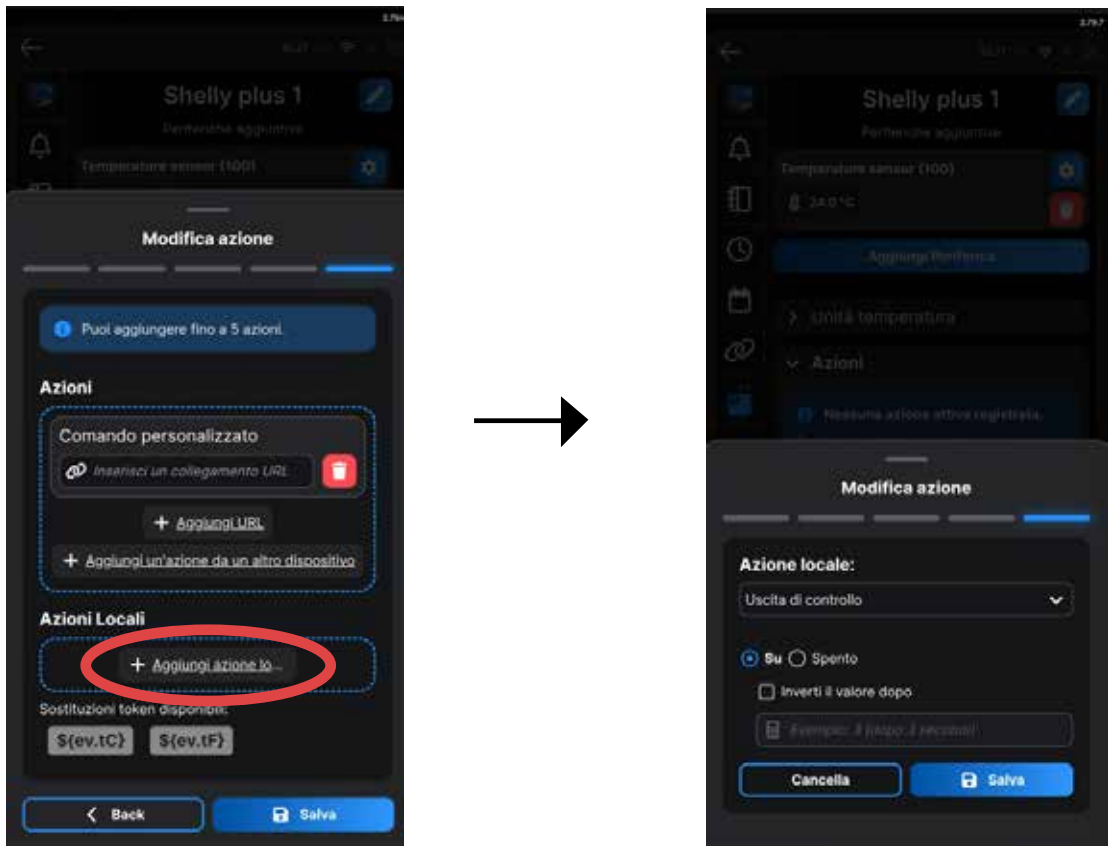
11) Choose "temperature sensor(100)" then click "next". Then choose the command name (type "turned on") then click on "next".



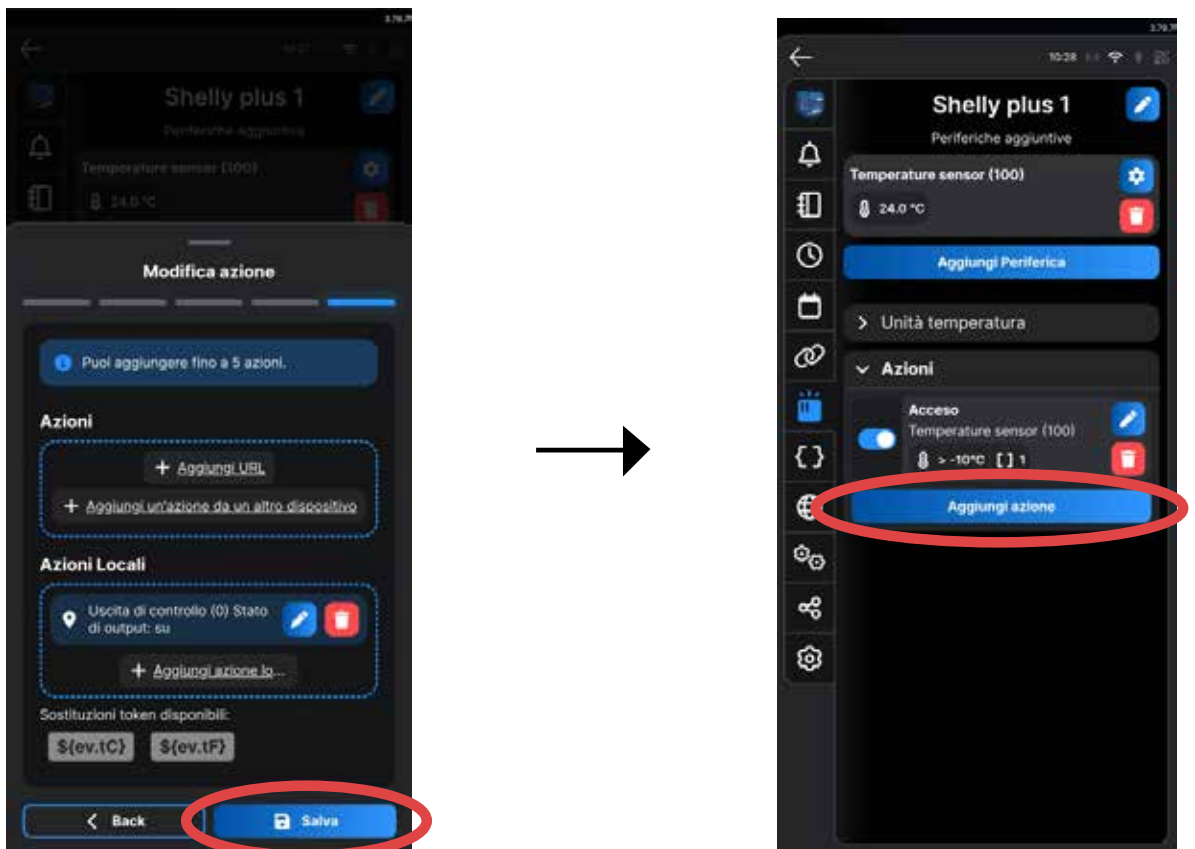
12) Click on "next" without touching anything. Set the settings as per image ("temperature measurement", "bigger than", "-10", "180").



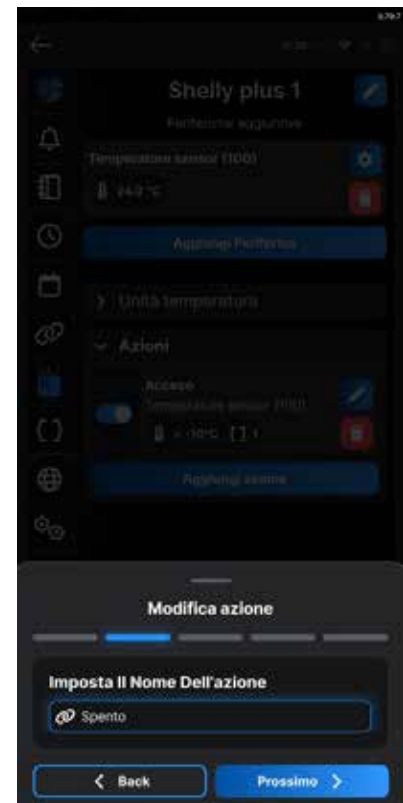
13) Click on "add local action" and select "up" then click "save".



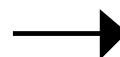
14) Click on "save" and then on "add action".



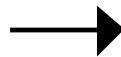
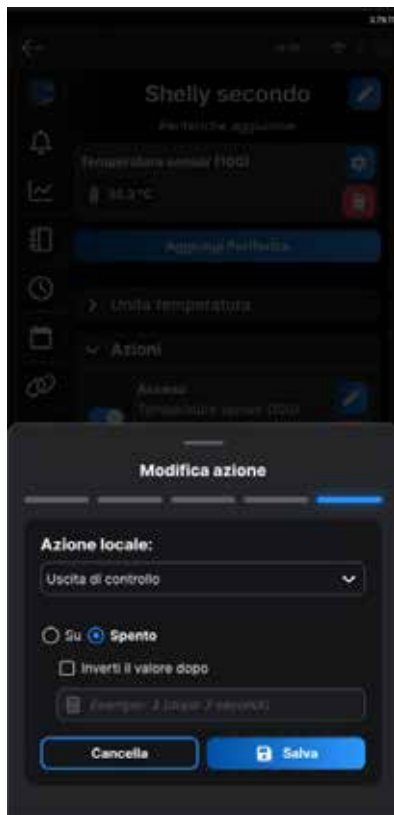
15) Choose "temperature sensor(100)" then click "next". Then choose the command name (type "turned off") then click "next".



16) Do not select anything. Click directly on "next", then put the settings as per image ("temperature measurement", "bigger than", "80", "5") then click on next.



17) Click "off" and then "save", and save again.



18) From these screens you can see all the actions that have been inserted and turn the Shelly device on and off remotely.





Sunerg Solar Energy Srl
Via Donini, 51
Loc. Cinquemiglia
06012 Città di Castello - PG
info@sunergsolar.com
www.sunergsolar.com
+039 075 85 40 018
P.IVA 03728000542