

HB_0



BOLLITORE INTEGRATO PER SOLARE E PRODUZIONE DI ACQUA CALDA SANITARIA VERSIONE ORIZZONTALE
 INTEGRATED TANK FOR SOLAR AND SANITARY HOT WATER PRODUCTION HORIZONTAL VERSION



- INTEGRABILE SU TUTTI I TIPI DI IMPIANTI
- RAPIDITÀ DI ACCUMULO CON EROGAZIONE ABBONDANTE E CONTINUA
- ALTA EFFICIENZA PER BASSI COSTI DI ESERCIZIO
- ASSOLUTA IGIENE
- LUNGA DURATA SENZA CORROSIONE
- SEMPLICITÀ DI INSTALLAZIONE
- SERPENTINO ESTRAIBILE

TO BE INTEGRATED ON ALL KIND OF PLANTS
 STORAGE RAPIDITY, ABUNDANT AND CONTINUOUS EROGATION
 HIGH EFFICIENCY FOR LOW EXERCICE COSTS
 ABSOLUTE HYGIENE
 LONG DURABILITY WITHOUT CORROSION
 SIMPLICTY OF INSTALLATION
 REMOVABLE COIL

HB_0 SMALGLASS: Bollitore a serpentine estraibili in acciaio al carbonio, completo di protezione anodica, trattamento interno di vetrificazione secondo normative DIN 4753-3 e UNI 10025.

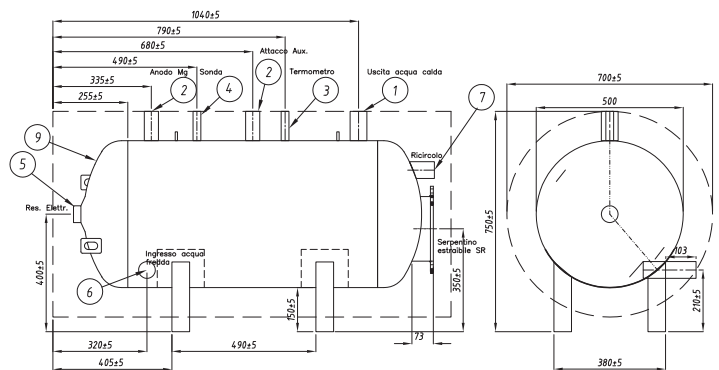
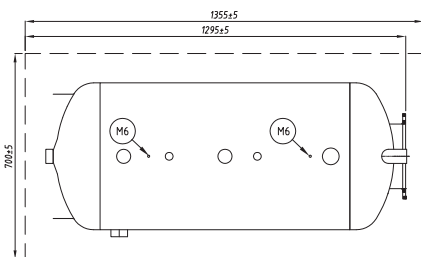
Isolamento: Poliuretano rigido spessore 50 o 70 mm (mod. 200÷600), fibra poliestere 100 mm (mod. 800÷2000).

GB HB_0 SMALGLASS: water-heater made of high quality steel with removable pipe-coils, complete with anodic protection, inside enamelled treatment according to norm DIN 4753-3 and UNI 10025.

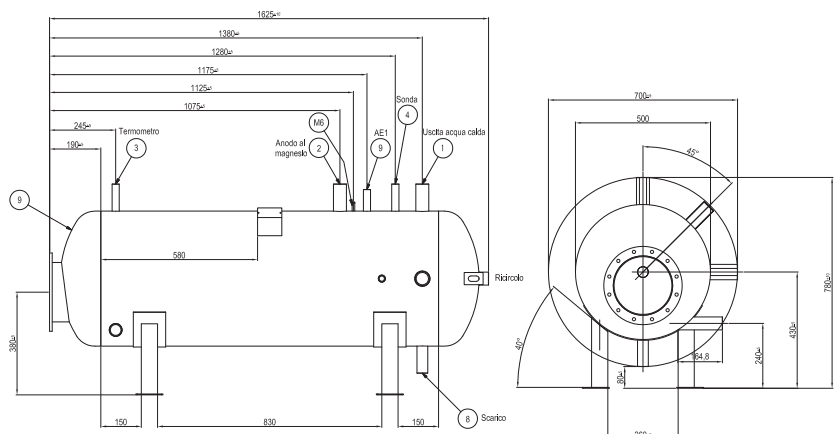
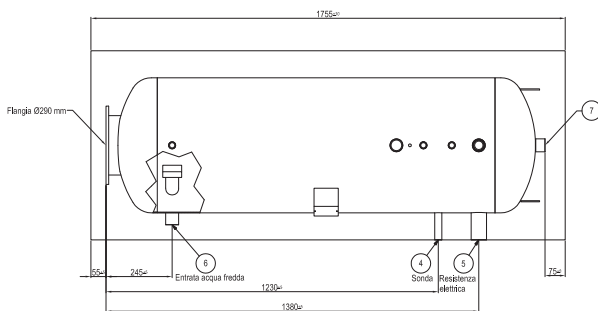
Insulation: Foamed hard polyurethane layer 50 or 70 mm (mod.200÷600), polyester fibre 100 mm (mod. 800÷2000).



HB_0 200

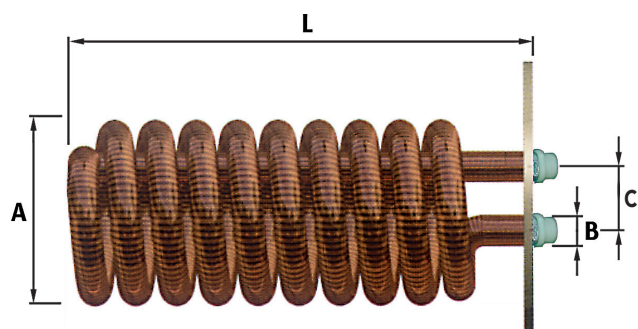


HB_0 300



DATI TECNICI / TECHNICAL DATA

		SMALGLASS			
HB_O		HB200_01	HB200_02	HB300_01	HB300_02
Volume utile / Storage volume	l	208		285	
Classe energetica - Dispersione fibra poliestere Energetic class - Standing loss polyester fibre	100 mm	C 77 W		C 95 W	
Lunghezza totale con isolamento Total Length with insulation	mm	1355		1755	
Bollitore isolamento fibra poliestere 100 mm Tank with 100 mm polyester fibre	∅ mm	700		700	
Flangia / Flansch / Flange	(n°) ∅ mm	1 Flangia 290/220	2 Flange 290/220	1 Flangia 290/220	2 Flange 290/220
Peso a vuoto / Weight empty	kg	70		91	
Pressione max. / Max. working pressure	bar	10			
Temperatura max. di esercizio del boiler Max. working-temperature boiler	°C	95			



SERPENTINO ESTRAIBILE EXTRA, VEDI PAG 64
EXTRA REMOVABLE COIL, SEE PAGE 64

N°	TIPO DI ATTACCO / CONNECTOR TYPE	MODELLO / MODEL	
		200	300
1.	Mandata acqua calda / Domestic hot water inlet	1"1/2	1"1/4
2.	Anodo / Anode	1"1/4	1"1/4
3.	Termometro / Thermometer	1/2"	1/2"
4.	Sonda / Feeler	1/2"	1/2"
5.	Resistenza elettrica / Electrical resistance	1"1/2	1"1/2
6.	Entrata acqua fredda / Cold water inlet	1" 1/2	1"1/4
7.	Ricircolo / Re-circulation	1"1/4	1"1/4
8.	Scarico / Drain coil	-	1"
9.	AE1	-	1/2"